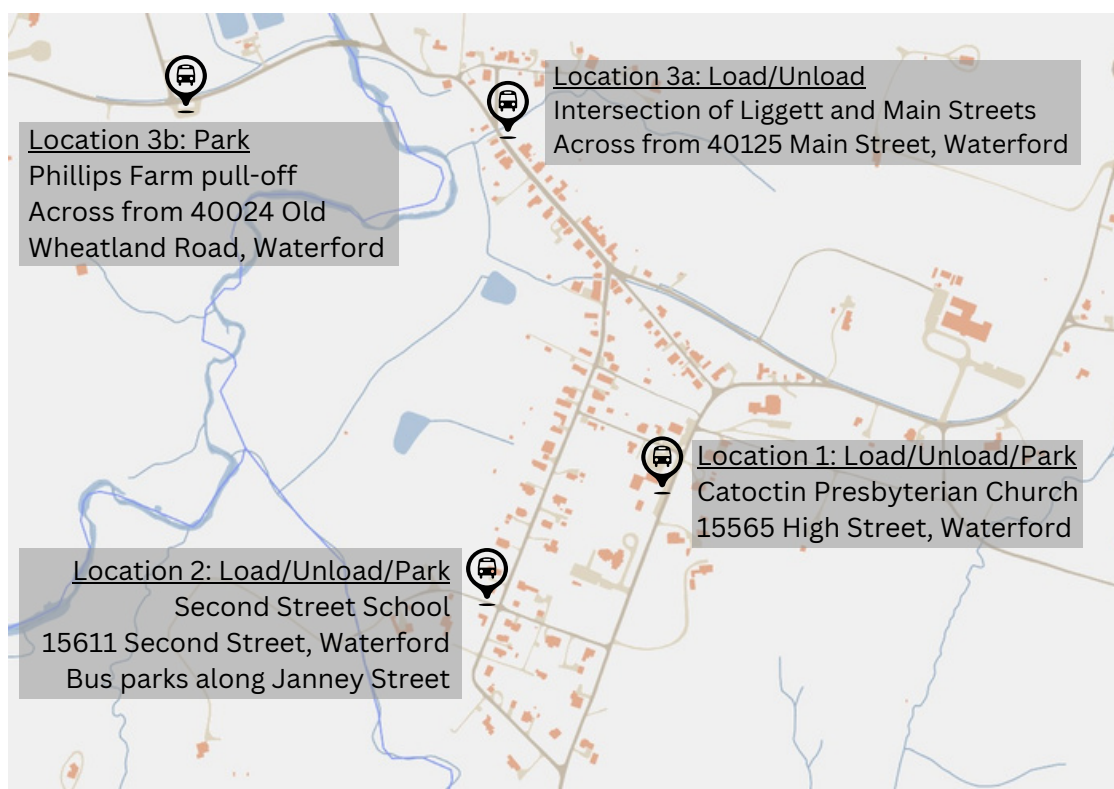


The Quest to Understand Life During Reconstruction and Beyond

Transportation Information

We are looking forward to welcoming your group to Waterford for your field trip. Please share this information with your transportation planners. For any questions on the day of the program, please call the Waterford Foundation office at 540-882-3018.

1. Students, teachers, and chaperones should be divided into three large groups, assigned to separate buses. (See separate instructions on student group structure.)
2. There are three unload/load locations spread across the village of Waterford. This allows us to save time by having the students begin their visit at one of the three hubs. Groups will finish their day at a different hub, meaning they are likely to be riding a different bus back to school.
3. All students will be taking their lunch breaks at the Old School, so all lunches should be transported on the bus(es) parking at Location 1. The lunches will be moved from the buses inside the Old School by Waterford Foundation staff/volunteers while the students begin their program.
4. If more than three buses are required to transport all students/teachers/chaperones, one or more buses may drop some students at each location, making a circuit of all three stops as necessary. Two of the three parking areas can accommodate more than one bus.



Group 1:
Load/Unload/Park: Catoclin Presbyterian Church (15565 High Street, Waterford) Bus can park in the church parking lot along High Street. Accommodates up to 2 buses.

Group 2:
Load/Unload/Park: on Janney Street next to the Second Street School (15611 Second Street, Waterford). Accommodates up to 1 bus.

Group 3:
Load/Unload: Intersection of Liggett and Main Streets (across from 40125 Main Street).
Park: the pull-off on the Phillips Farm, past the Mill and across from the Waterford water treatment facility (40024 Old Wheatland Road). Accommodates up to 2 buses.